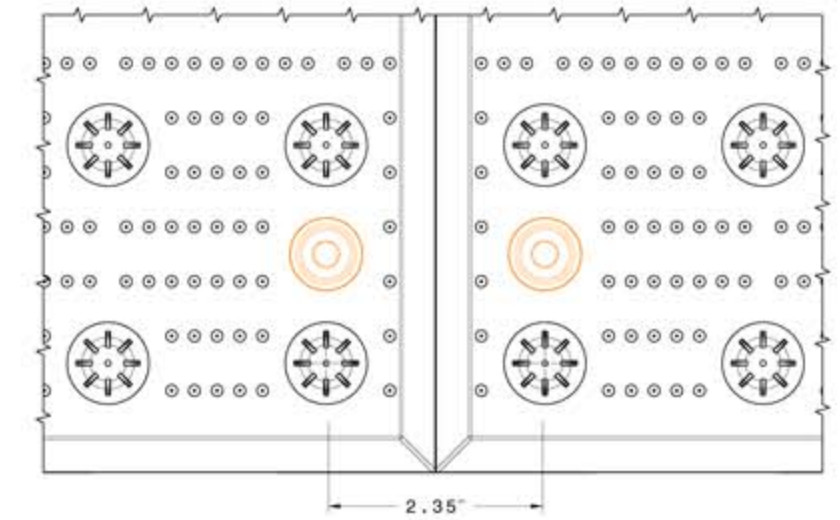
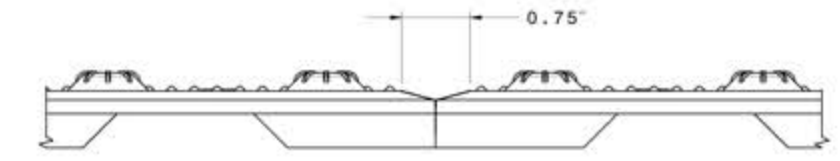


Fastener Location  
15 places  
(see fastener detail)



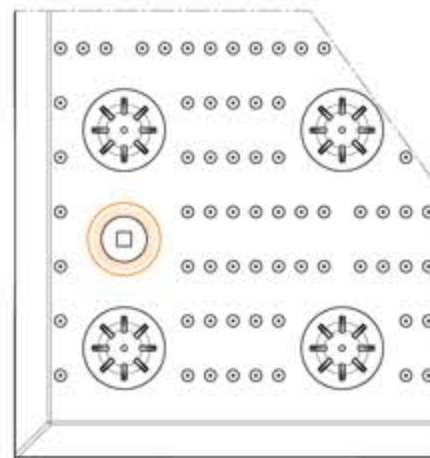
PLAN VIEW: 2-PANEL



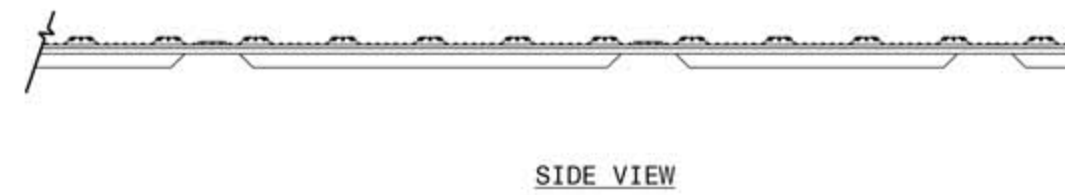
SIDE VIEW: 2-PANEL



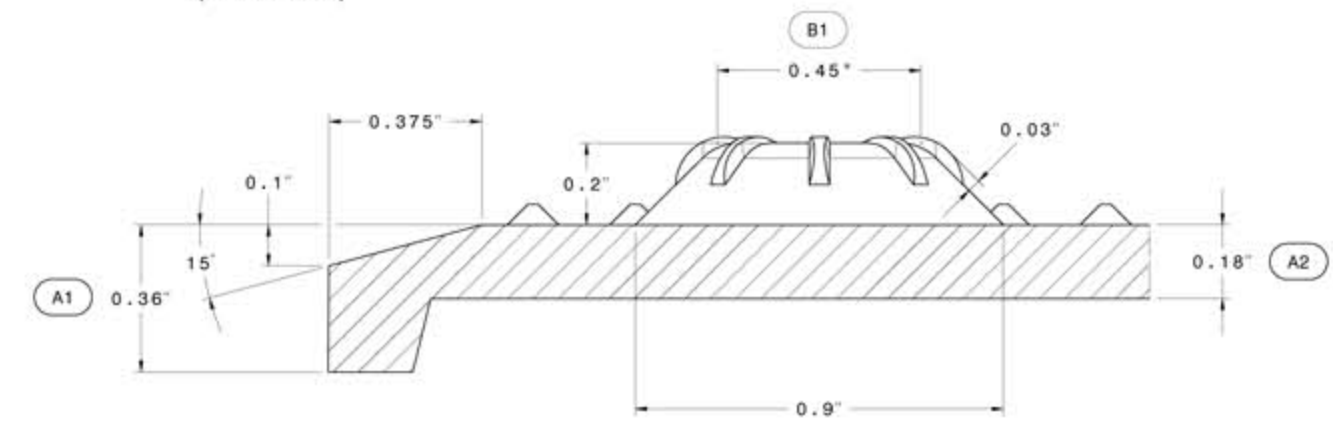
DETAIL B  
(VIEW ROTATED)



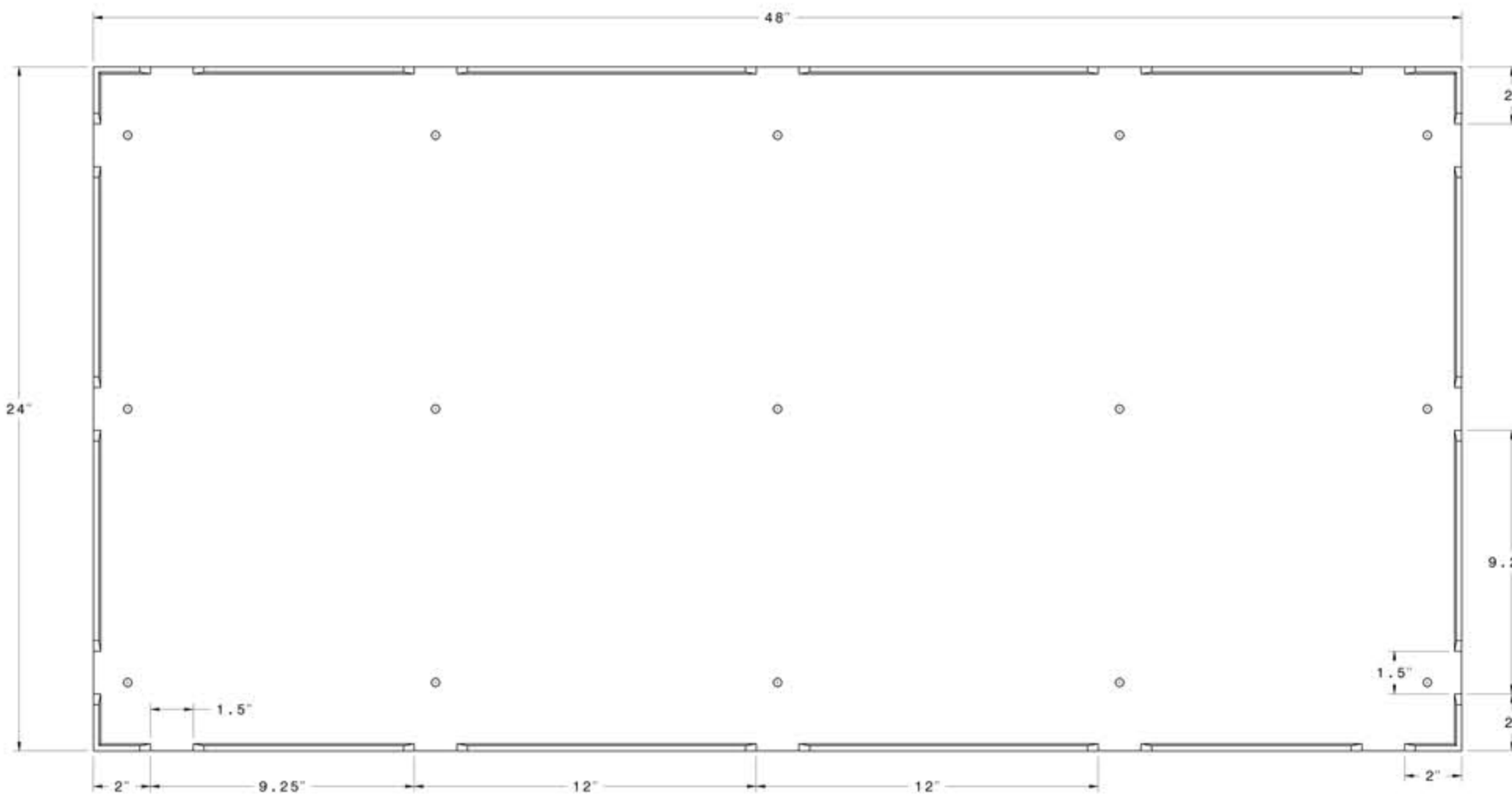
DETAIL A  
(Field area micro-domes closeup)



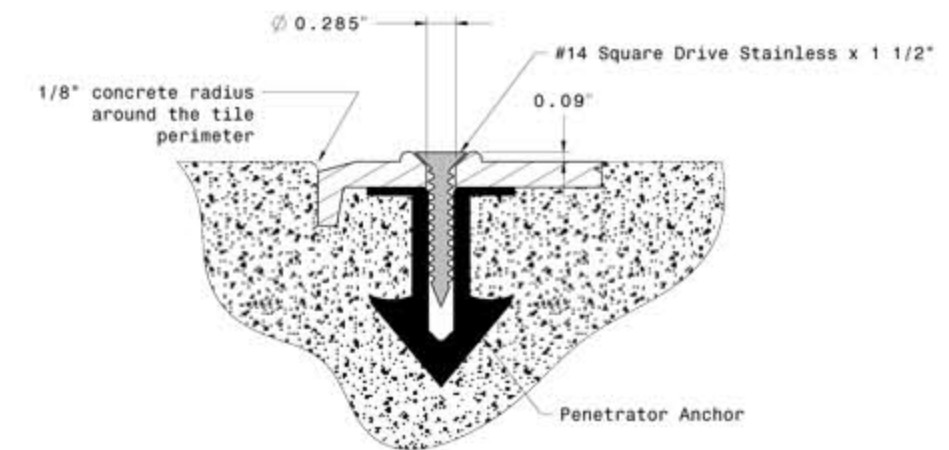
SIDE VIEW



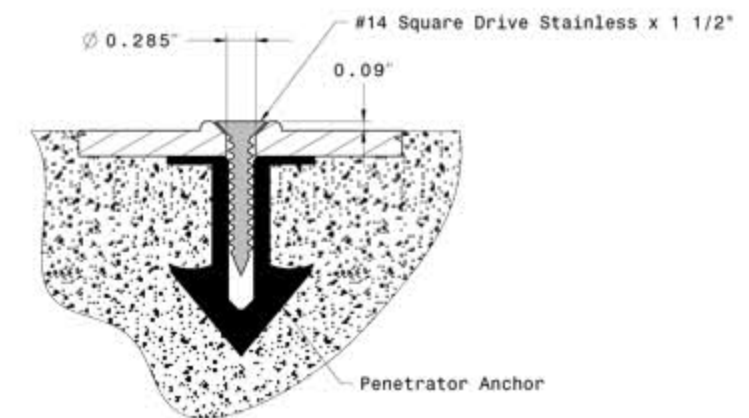
Section view A-A



UNDERSIDE VIEW



TYPICAL PERIMETER FASTENER DETAIL



TYPICAL INTERIOR FASTENER DETAIL

www.alerttile.com  
877-232-6287

SUBJECT:  
**alertcast**  
Detectable Warning System  
TRUNCATED DOME, DETECTABLE  
WARNING TACTILE SURFACE

**MATERIAL LIST**

ITEM	Description	PART No.	QTY
1	AlertCast Panel	AC-2448-XX	1
2	Stainless Screw	Alert Screw	15
3	Penetrator Anchor	PA-1	15

**REVISION HISTORY**

REV.	DATE	DESCRIPTION	APPROVED
A	10/12/11	1-Dimension was 0.625" 2-Dimension was 0.25"	AM
B	10/22/12	1-Added Dome dimension	AM

UNLESS OTHERWISE SPECIFIED  
DIMENSIONS ARE IN INCHES  
TOLERANCES: +/- 0.050"  
ANGLES: +/- 1 DEG.

APPROVALS: [Signature] DATE: 05/05/2010  
[Signature] DATE: 05/11/2010  
[Signature] DATE: 05/14/2010

PROJECT:  
**alertcast**  
Detectable Warning System  
TRUNCATED DOME, DETECTABLE  
WARNING TACTILE SURFACE  
2x4 CAST IN PLACE replaceable  
INLINE DOME TILE DRAWING.

SERVICE NUMBER: AC-2448 REV: B